

NPT ENDS BALL VALVE



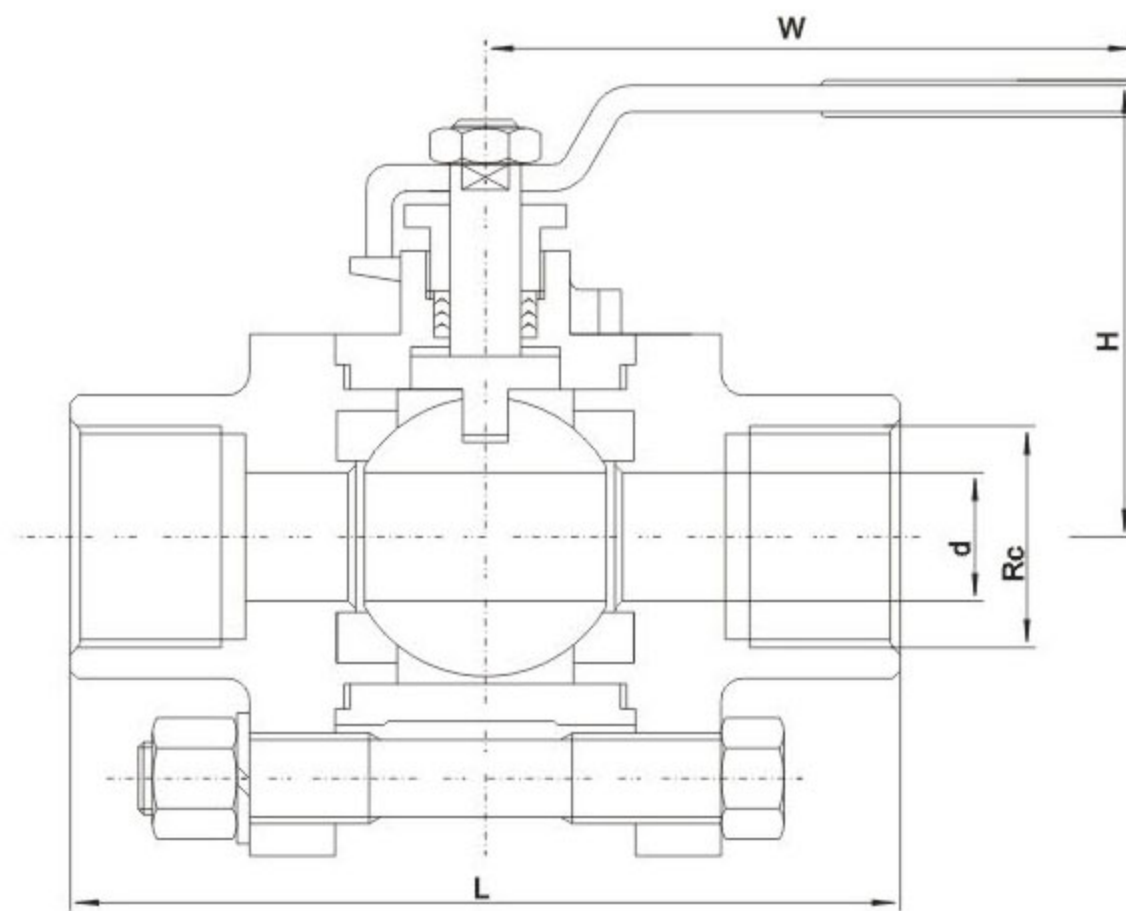
USAGE

The NPT ends ball valve is used to cut off or connect the media in middle and low pressure pipelines. The driving modes include manual operation, or pneumatic operation and electric operation. According to different

structure designs, the valves can be one-piece, two-piece and three-piece.

Part Materials And Main Parameters

Model		QS11F-WP8		QS11F-WR8		
Structural features		Three-piece				
Nominal diameter (in)		NPS 3/8~3				
Pressure class (MPa)		800WOG or 1000WOG				
Materials of parts	No.	Part Name	Materials			
			Stainless steel			
	1	Body	ASTM A351 CF8	ASTM A351 CF8M	ASTM A351 CF3	ASTM A351 CF3M
	2	Seat	PTFE/ PPL			
	3	Ball	ASTM A182 304	ASTM A182 316	ASTM A182 304L	ASTM A182 316L
	4	Stem	ASTM A182 304	ASTM A182 316	ASTM A182 304L	ASTM A182 316L
	5	Packing	Graphite			
Applicable service conditions	Applicable medium	Nitric acid	Acetic acid	Strong oxidizer	Urea	
	Applicable temperature	≤120°C (PTFE)				
Design and manufacturing		API 608				
Type of connection		API 598				
Pressure test		Female thread connection (generally the taper pipe thread Rc is adopted, NPT thread can also be adopted according to user requirements)				
Transmission mode		Manual, worm and worm gear transmission, pneumatic, electric				



Main dimensions and weight

Structural form	Dimensions		Rc	Size(mm)				weight (Kg)
	DN	NPS		L	D	W	H	
three-piece	10	3/8"	3/8"	60	10	95	57	0.4
	15	1/2"	1/2"	75	14	110	68	0.5
	20	3/4"	3/4"	80	19	110	70	0.7
	25	1"	1"	90	25	140	80	1.2
	32	1 1/4"	1 1/4"	110	32	140	85	1.9
	40	1 1/2"	1 1/2"	120	38	180	100	2.7
	50	2"	2"	144	50	180	110	3.9
	65	2 1/2"	2 1/2"	186	64	200	130	7.1
	80	3"	3"	206	76	250	150	11.5
	100	4"	4"	240	100	250	170	20.5